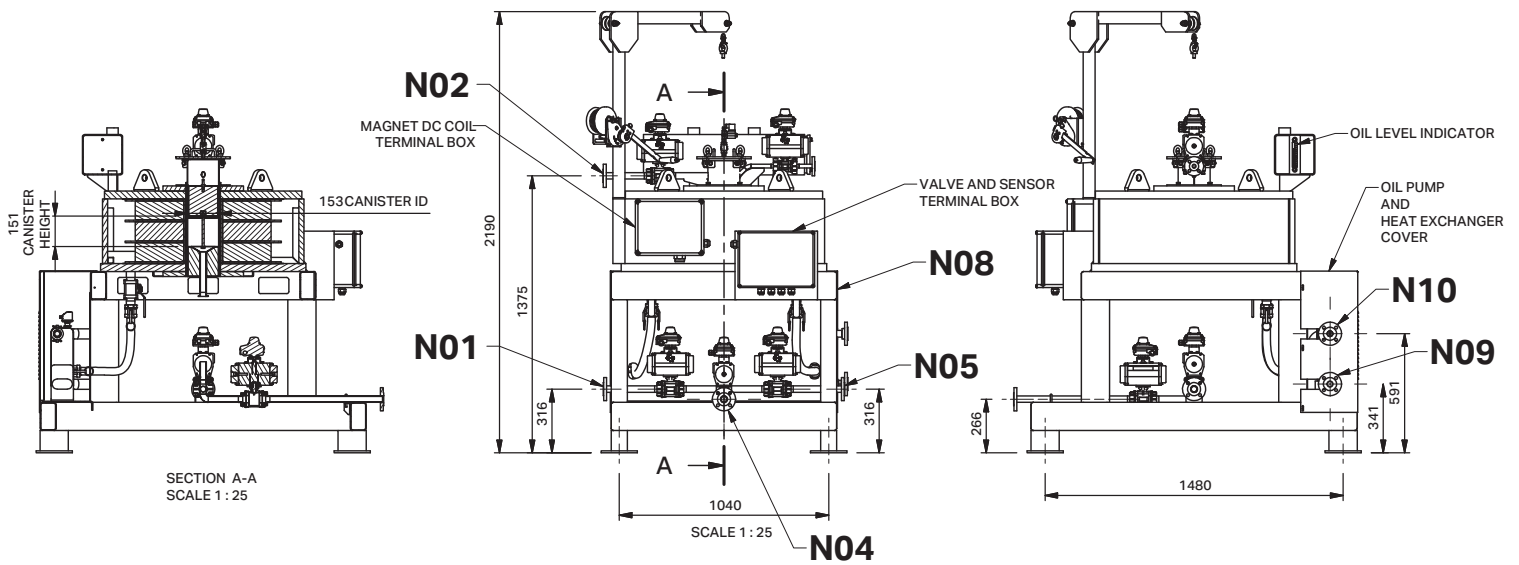
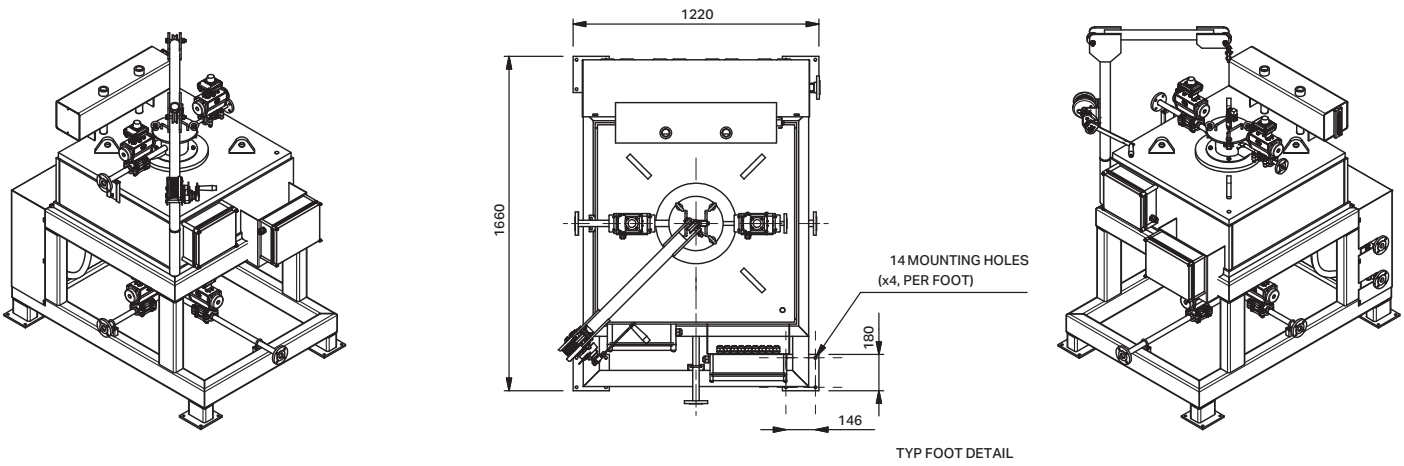


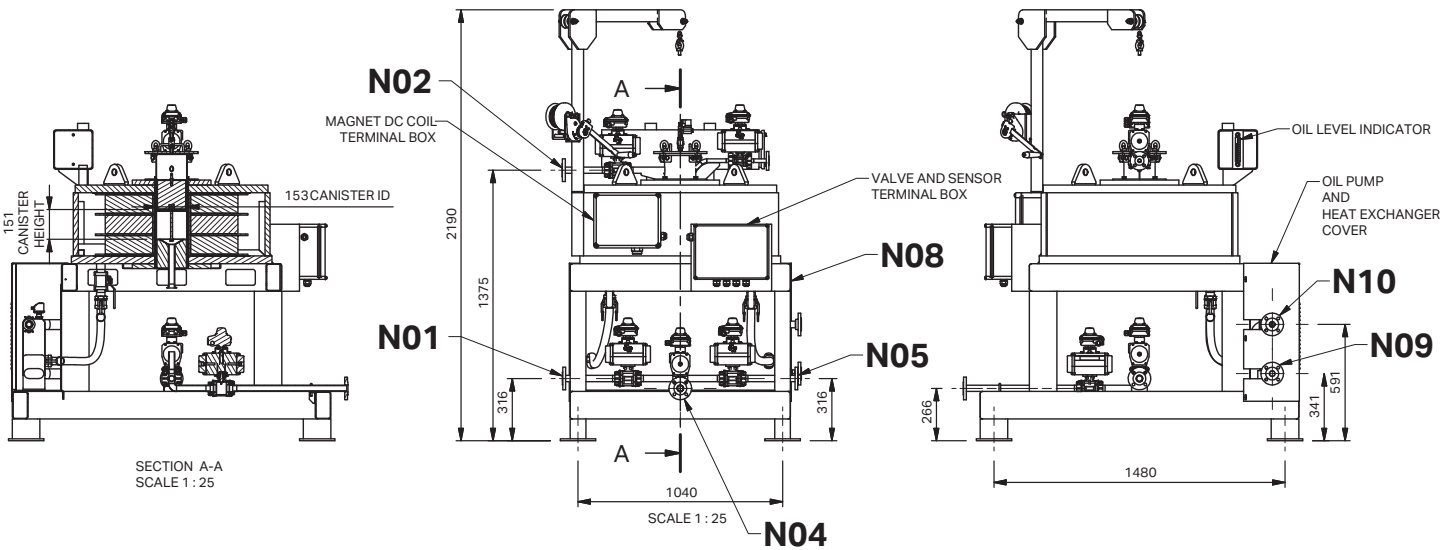
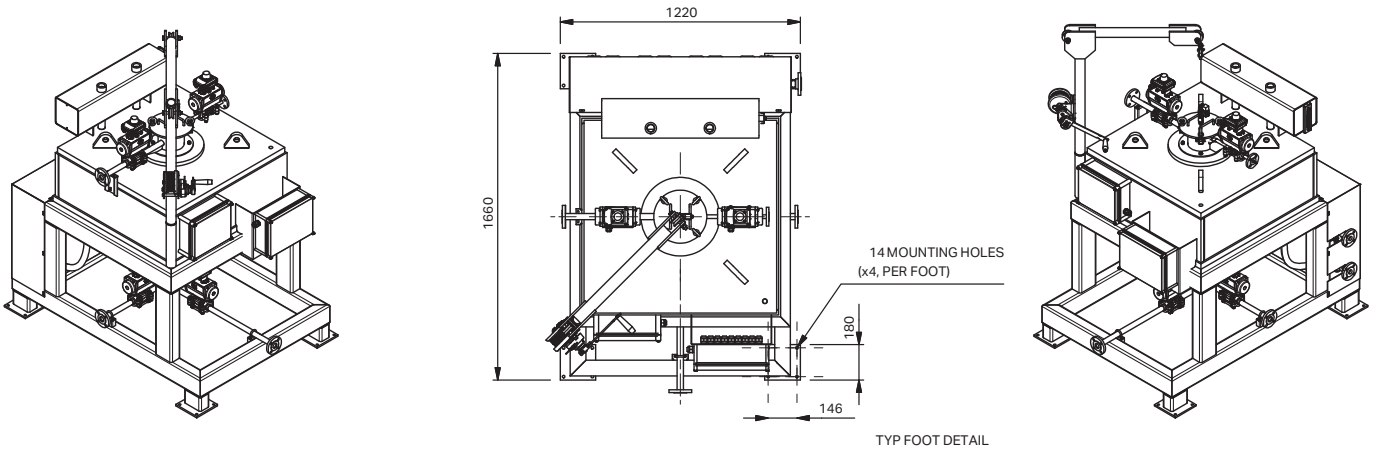
MODEL: HIWF150-35-CP



| NOZZLE TABLE | | | |
|--------------|--------|------------------------|---------------------|
| ITEM | NOZZLE | DESCRIPTION | SIZE/TYPE |
| 1 | N01 | PRODUCT FEED IN | DN50-PN16 RF FLANGE |
| 2 | N02 | FILTERED PRODUCT OUT | DN50-PN16 RF FLANGE |
| 3 | N03 | FLUSH WATER IN | DN15-PN16 RF FLANGE |
| 4 | N04 | FLUSH WATER/MAGS OUT | DN50-PN16 RF FLANGE |
| 5 | N05 | RECYCLE/MIDDINGS OUT | DN50-PN16 RF FLANGE |
| 6 | N06 | AIR IN - HIGH PRESSURE | 10mm OD AIR FITTING |
| 7 | N07 | AIR IN - LOW PRESSURE | 10mm OD AIR FITTING |
| 8 | N08 | AIR MANIFOLD (VALVES) | 10mm OD AIR FITTING |
| 9 | N09 | COOLING WATER IN | DN25-PN16 RF FLANGE |
| 10 | N10 | COOLING WATER OUT | DN25-PN16 RF FLANGE |

| TECHNICAL PARAMETERS | |
|---------------------------------------|--|
| MASS: | MAGNET ASSEMBLY: 1860 KG CONTROL CABINET: 180 KG WATER CHILLER (OPTIONAL): 150 KG |
| POWER INPUT: | 400V 50HZ 3PH or 480V 60HZ 3PH (OPTIONS) |
| GAUSS WITHOUT MATRIX: | 0-3500 G |
| MATRIX: | EXPANDED MESH - SIZE TBD - ORDERED SEPARATELY |
| COIL POWER: | 4.8 kW |
| COOLING SYSTEM | |
| DESCRIPTION: | COIL IS IN OIL. OIL IS WATER COOLED VIA HEAT EXCHANGER COOLING WATER IS COOLED VIA CLEAN FRESH WATER |
| OIL VOLUME: | 250 LTS |
| OIL PUMP: | 0.37 KW, 400V, 3PH, 50HZ, FLOW RATE: 140 L/MIN or 0.37 KW, 480V, 3PH, 60HZ, FLOW RATE: 140 L/MIN |
| COOLING WATER: | 20-25 L/MIN, TEMPERATURE < 20 DEG C |
| COMPRESSED AIR (FOR VALVE OPERATION): | |
| PRESSURE: | 6 BAR (MIN) |
| FLOW: | >120 L/MIN |

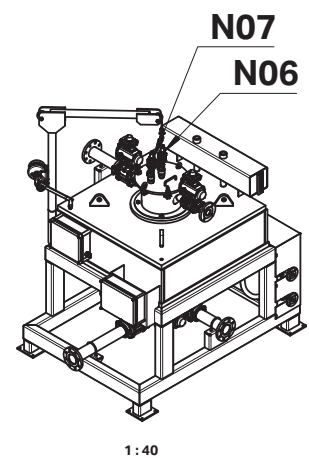
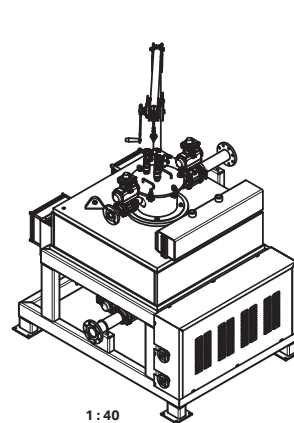
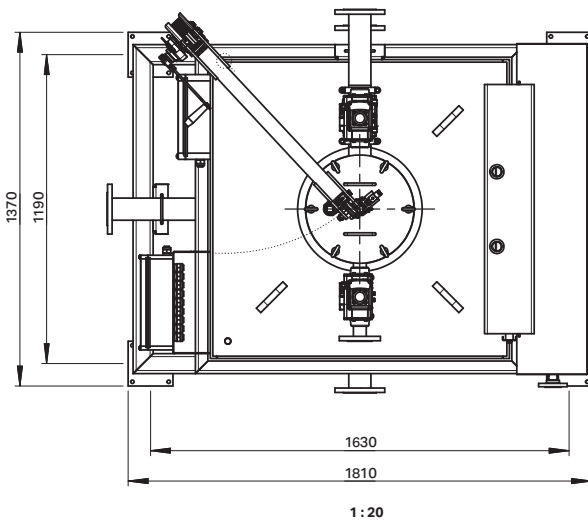
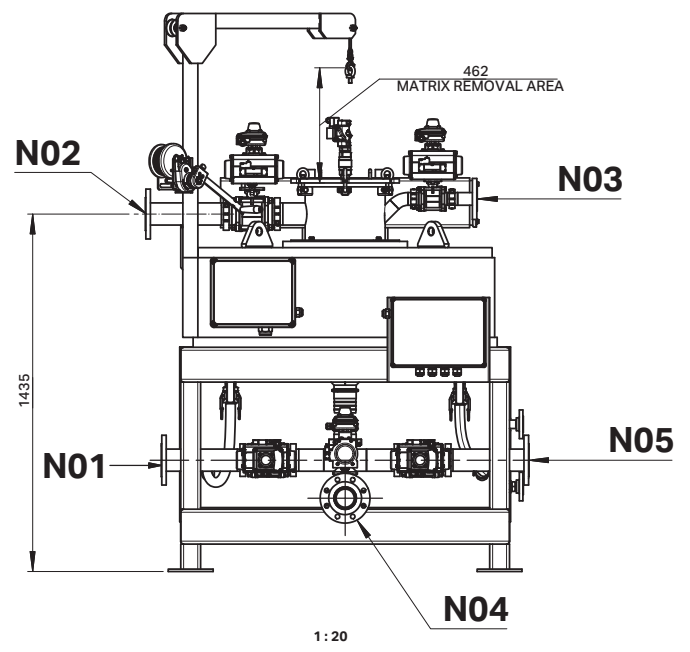
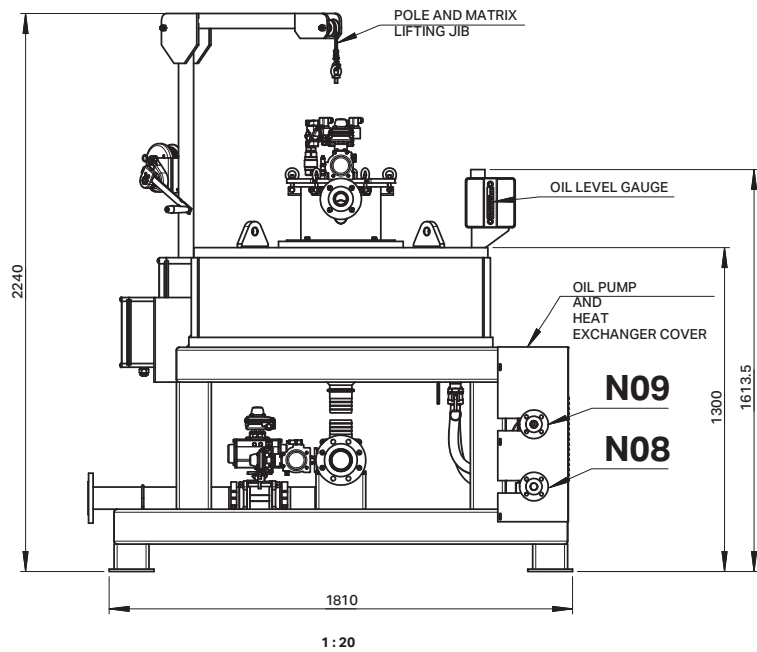
MODEL: HIWF150-50-CP



| NOZZLE TABLE | | | |
|--------------|--------|------------------------|---------------------|
| ITEM | NOZZLE | DESCRIPTION | SIZE/TYPE |
| 1 | N01 | PRODUCT FEED IN | DN50-PN16 RF FLANGE |
| 2 | N02 | FILTERED PRODUCT OUT | DN50-PN16 RF FLANGE |
| 3 | N03 | FLUSH WATER IN | DN15-PN16 RF FLANGE |
| 4 | N04 | FLUSH WATER/MAGS OUT | DN50-PN16 RF FLANGE |
| 5 | N05 | RECYCLE/MIDDINGS OUT | DN50-PN16 RF FLANGE |
| 6 | N06 | AIR IN - HIGH PRESSURE | 10mm OD AIR FITTING |
| 7 | N07 | AIR IN - LOW PRESSURE | 10mm OD AIR FITTING |
| 8 | N08 | AIR MANIFOLD (VALVES) | 10mm OD AIR FITTING |
| 9 | N09 | COOLING WATER IN | DN25-PN16 RF FLANGE |
| 10 | N10 | COOLING WATER OUT | DN25-PN16 RF FLANGE |

| TECHNICAL PARAMETERS | |
|---------------------------------------|--|
| MASS: | MAGNET ASSEMBLY: 1960 KG |
| | CONTROL CABINET: 230 KG |
| | WATER CHILLER (OPTIONAL): 150 KG |
| POWER INPUT: | 400V 50HZ 3PH or 480V 60HZ 3PH (OPTIONS) |
| GAUSS WITHOUT MATRIX: | 0-5000 G |
| MATRIX: | EXPANDED MESH - SIZE TBD - ORDERED SEPARATELY |
| COIL POWER: | 8.5 kW |
| COOLING SYSTEM | |
| DESCRIPTION: | COIL IS IN OIL. OIL IS WATER COOLED VIA HEAT EXCHANGER COOLING WATER IS COOLED VIA CLEAN FRESH WATER |
| OIL VOLUME: | 220 LTS |
| OIL PUMP: | 0.37 KW, 400V, 3PH, 50HZ, FLOW RATE: 140 L/MIN or 0.37 KW, 480V, 3PH, 60HZ, FLOW RATE: 140 L/MIN |
| COOLING WATER: | 40-50 L/MIN, TEMPERATURE < 20 DEG C |
| COMPRESSED AIR (FOR VALVE OPERATION): | |
| PRESSURE: | 6 BAR (MIN) |
| FLOW: | >120 L/MIN |

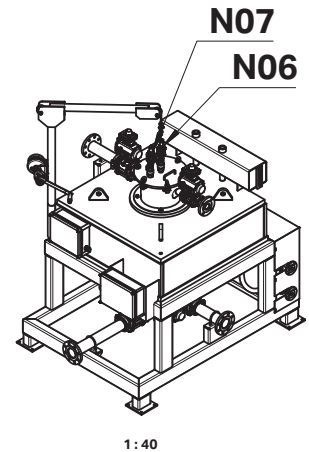
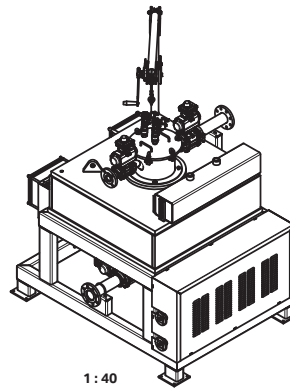
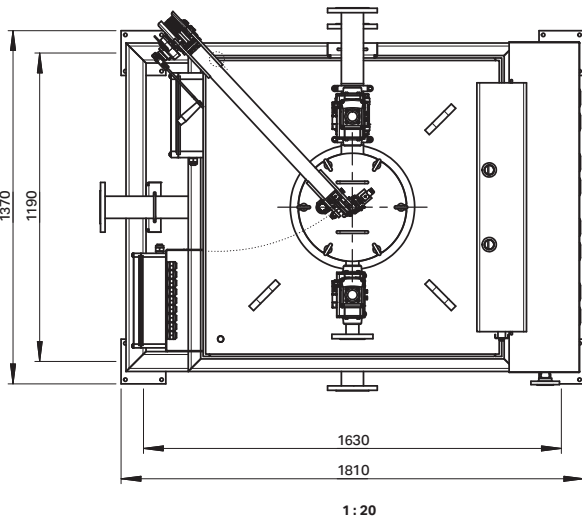
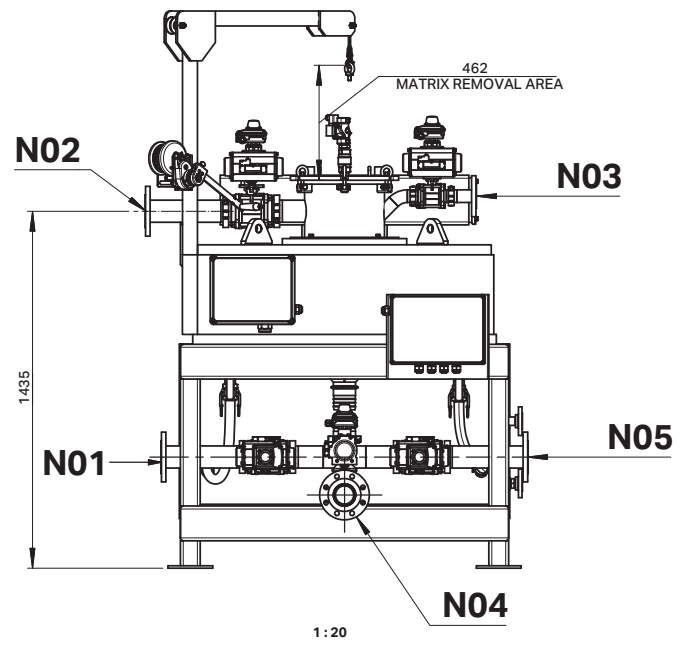
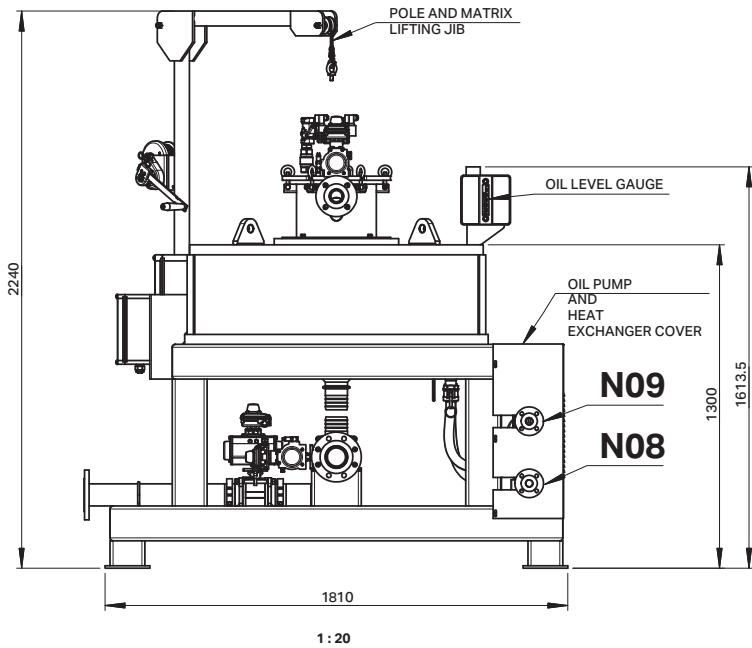
MODEL: HIWF250-35-CP



| NOZZLE TABLE | | | |
|--------------|--------|---------------------|-----------------------|
| ITEM | NOZZLE | DESCRIPTION | SIZE |
| 1 | N01 | PRODUCT IN | DN80 - PN16 RF FLANGE |
| 2 | N02 | PRODUCT OUT | DN80 - PN16 RF FLANGE |
| 3 | N03 | WATER FLUSH IN | DN80 - PN16 RF FLANGE |
| 4 | N04 | MAGNETICS OUT | DN80 - PN16 RF FLANGE |
| 5 | N05 | MIDDINGS OUT | DN80 - PN16 RF FLANGE |
| 6 | N06 | AIR - HIGH PRESSURE | DN25 - 1" BSPP |
| 7 | N07 | AIR - LOW PRESSURE | DN25 - 1" BSPP |
| 8 | N08 | COOLING WATER IN | DN25 - 1" BSPP |
| 9 | N09 | COOLING WATER OUT | DN25 - 1" BSPP |

| TECHNICAL PARAMETERS | | | |
|-----------------------|--|---|--------------------|
| MASS: | MAGNET ASSEMBLY: 2600 KG CONTROL CABINET: 320 KG WATER CHILLER (OPTIONAL): 150 KG | CLEAN WATER SUPPLY FREE OF MAGNETICS & PARTICLES >30um (FOR N03 FLUSH): | |
| POWER INPUT | 400V3PH 50HZ | PRESSURE: | |
| GAUSS WITHOUT MATRIX: | 0-3500 G | FLOW: | |
| MATRIX: | 250 DIA EXPANDED MESH | COMPRESSED AIR (FOR HIGH PRESSURE FLUSH): | |
| COIL POWER: | 7.5 KW (MAX) | PRESSURE: | 3-4 BAR ADJUSTABLE |
| COOLING SYSTEM | | FLOW: | >120 L/MIN |
| DESCRIPTION: | COIL IS IN OIL. OIL IS WATER COOLED VIA HEAT EXCHANGER COOLING WATER IS COOLED VIA CLEAN FRESH WATER | COMPRESSED AIR (FOR LOW PRESSURE FLUSH): | |
| | OIL VOLUME | 260 LTS | PRESSURE: |
| OIL PUMP: | 0.37 KW, 400V, 3PH, 50HZ, FLOW RATE: 140 L/MIN | FLOW: | >50 L/MIN |
| COOLING WATER: | 45-50 L/MIN, TEMPERATURE < 20 DEG C | COMPRESSED AIR (FOR VALVE OPERATION): | |
| | | PRESSURE: | 6 BAR (MIN) |
| | | FLOW: | >120 L/MIN |

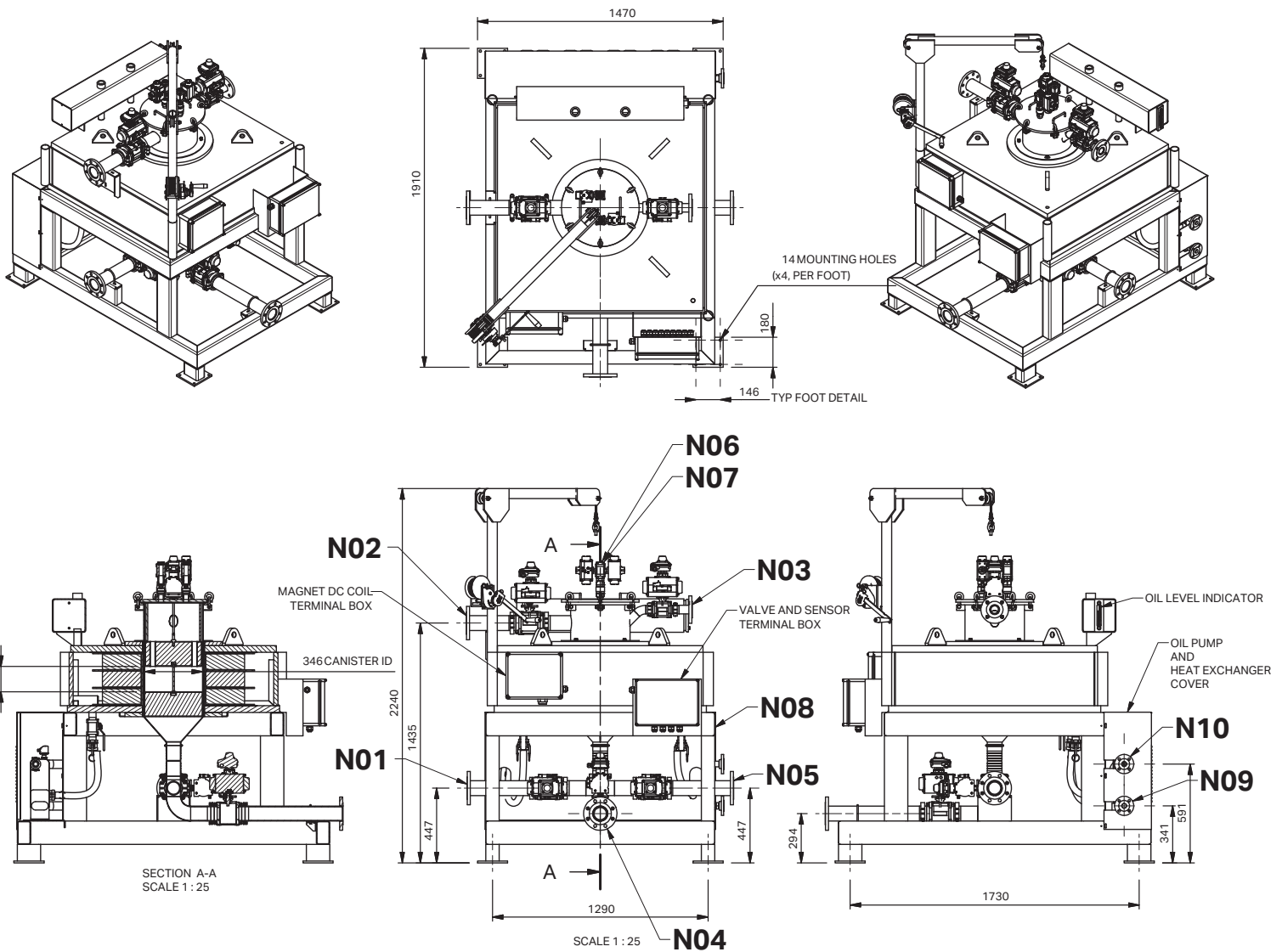
MODEL: HIWF250-50-CP



| NOZZLE TABLE | | | |
|--------------|--------|---------------------|-----------------------|
| ITEM | NOZZLE | DESCRIPTION | SIZE |
| 1 | N01 | PRODUCT IN | DN80 - PN16 RF FLANGE |
| 2 | N02 | PRODUCT OUT | DN80 - PN16 RF FLANGE |
| 3 | N03 | WATER FLUSH IN | DN80 - PN16 RF FLANGE |
| 4 | N04 | MAGNETICS OUT | DN80 - PN16 RF FLANGE |
| 5 | N05 | MIDDLINGS OUT | DN80 - PN16 RF FLANGE |
| 6 | N06 | AIR - HIGH PRESSURE | DN25 - 1" BSPP |
| 7 | N07 | AIR - LOW PRESSURE | DN25 - 1" BSPP |
| 8 | N08 | COOLING WATER IN | DN25 - 1" BSPP |
| 9 | N09 | COOLING WATER OUT | DN25 - 1" BSPP |

| TECHNICAL PARAMETERS | | |
|-----------------------|--|---|
| MASS: | MAGNET ASSEMBLY: 2980 KG CONTROL CABINET: 400 KG WATER CHILLER (OPTIONAL): 150 KG | CLEAN WATER SUPPLY FREE OF MAGNETICS & PARTICLES >30um (FOR N03 FLUSH): |
| POWER INPUT | 400V 3PH 50HZ | PRESSURE: 5-6 BAR FLOW: 25-30 L/MIN |
| GAUSS WITHOUT MATRIX: | 0-5000 G | COMPRESSED AIR (FOR HIGH PRESSURE FLUSH): |
| MATRIX: | 250 DIA EXPANDED MESH | PRESSURE: 3-4 BAR ADJUSTABLE FLOW: >120 L/MIN |
| COIL POWER: | 14.5 KW (MAX) | COMPRESSED AIR (FOR LOW PRESSURE FLUSH): |
| COOLING SYSTEM | | PRESSURE: 0-2 BAR ADJUSTABLE FLOW: >50 L/MIN |
| DESCRIPTION: | COIL IS IN OIL. OIL IS WATER COOLED VIA HEAT EXCHANGER COOLING WATER IS COOLED VIA CLEAN FRESH WATER | COMPRESSED AIR (FOR VALVE OPERATION): |
| | OIL VOLUME: 240 LTS | PRESSURE: 6 BAR (MIN) FLOW: >120 L/MIN |
| OIL PUMP: | 0.37 KW, 400V, 3PH, 50HZ, FLOW RATE: 140 L/MIN | |
| COOLING WATER: | 45-50 L/MIN, TEMPERATURE < 20 DEG C | |

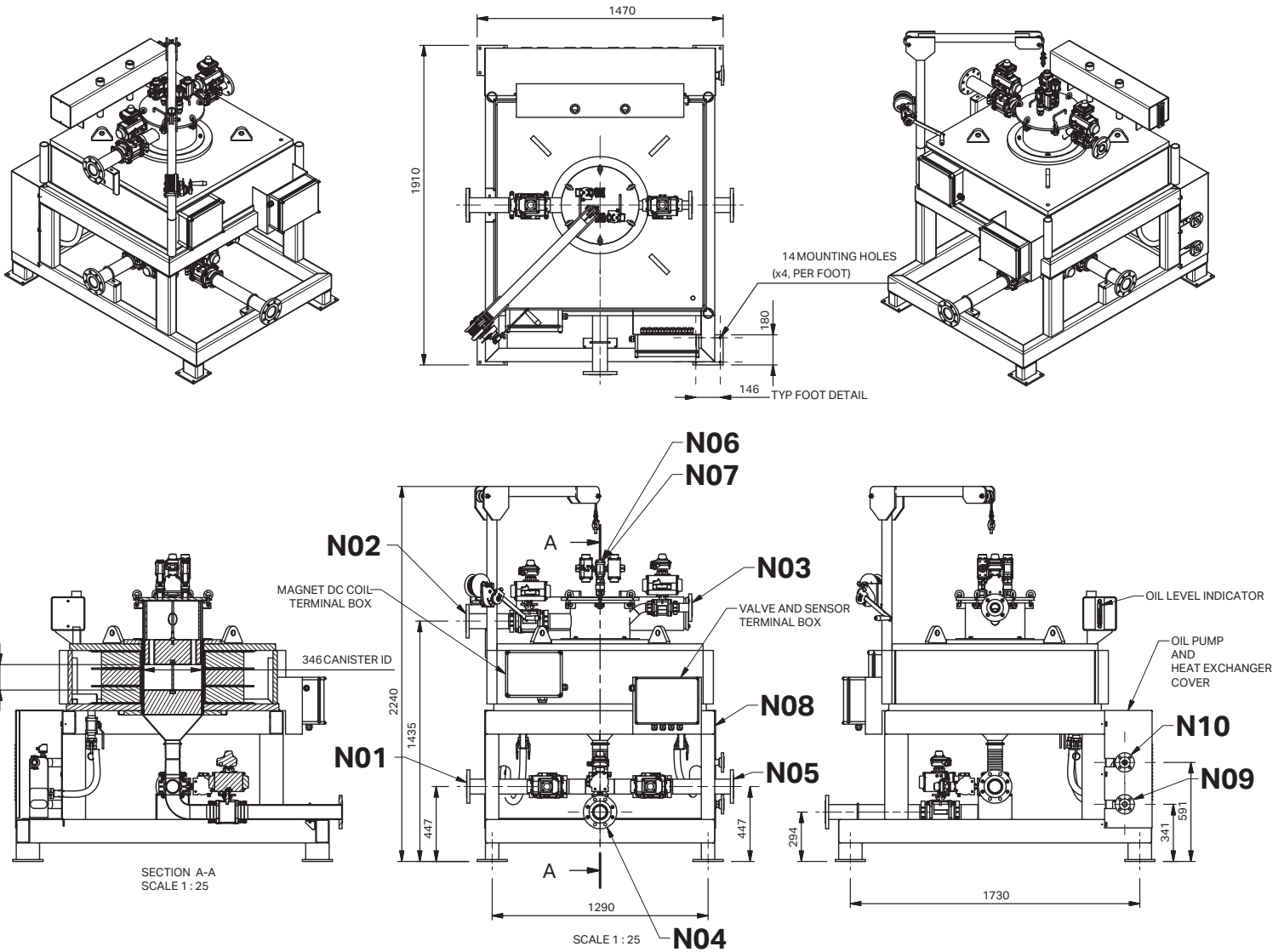
MODEL: HIWF350-35-CP



| NOZZLE TABLE | | | |
|--------------|--------|------------------------|---------------------|
| ITEM | NOZZLE | DESCRIPTION | SIZE/TYPE |
| 1 | N01 | PRODUCT FEED IN | DN80-PN16 RF FLANGE |
| 2 | N02 | FILTERED PRODUCT OUT | DN80-PN16 RF FLANGE |
| 3 | N03 | FLUSH WATER IN | DN40-PN16 RF FLANGE |
| 4 | N04 | FLUSH WATER/MAGS OUT | DN80-PN16 RF FLANGE |
| 5 | N05 | RECYCLE/MIDDINGS OUT | DN80-PN16 RF FLANGE |
| 6 | N06 | AIR IN - HIGH PRESSURE | 1" BSPF |
| 7 | N07 | AIR IN - LOW PRESSURE | 1" BSPF |
| 8 | N08 | AIR MANIFOLD (VALVES) | 10mm OD AIR FITTING |
| 9 | N09 | COOLING WATER IN | DN25-PN16 RF FLANGE |
| 10 | N10 | COOLING WATER OUT | DN25-PN16 RF FLANGE |

| TECHNICAL PARAMETERS | |
|---------------------------------------|--|
| MASS: | MAGNET ASSEMBLY: 3250 KG CONTROL CABINET: 350 KG WATER CHILLER (OPTIONAL): 150 KG |
| POWER INPUT: | 400V 50HZ 3PH or 480V 60HZ 3PH (OPTIONS) |
| GAUSS WITHOUT MATRIX: | 0-3500 G |
| MATRIX: | EXPANDED MESH - SIZE TBD - ORDERED SEPARATELY |
| COIL POWER: | 8.9 kW |
| COOLING SYSTEM | |
| DESCRIPTION: | COIL IS IN OIL. OIL IS WATER COOLED VIA HEAT EXCHANGER COOLING WATER IS COOLED VIA CLEAN FRESH WATER |
| OIL VOLUME: | 290 LTS |
| OIL PUMP: | 0.37 KW, 400V, 3PH, 50HZ, FLOW RATE: 140 L/MIN or 0.37 KW, 480V, 3PH, 60HZ, FLOW RATE: 140 L/MIN |
| COOLING WATER: | 50-65 L/MIN, TEMPERATURE < 20 DEG C |
| COMPRESSED AIR (FOR VALVE OPERATION): | |
| PRESSURE: | 6 BAR (MIN) |
| FLOW: | >120 L/MIN |

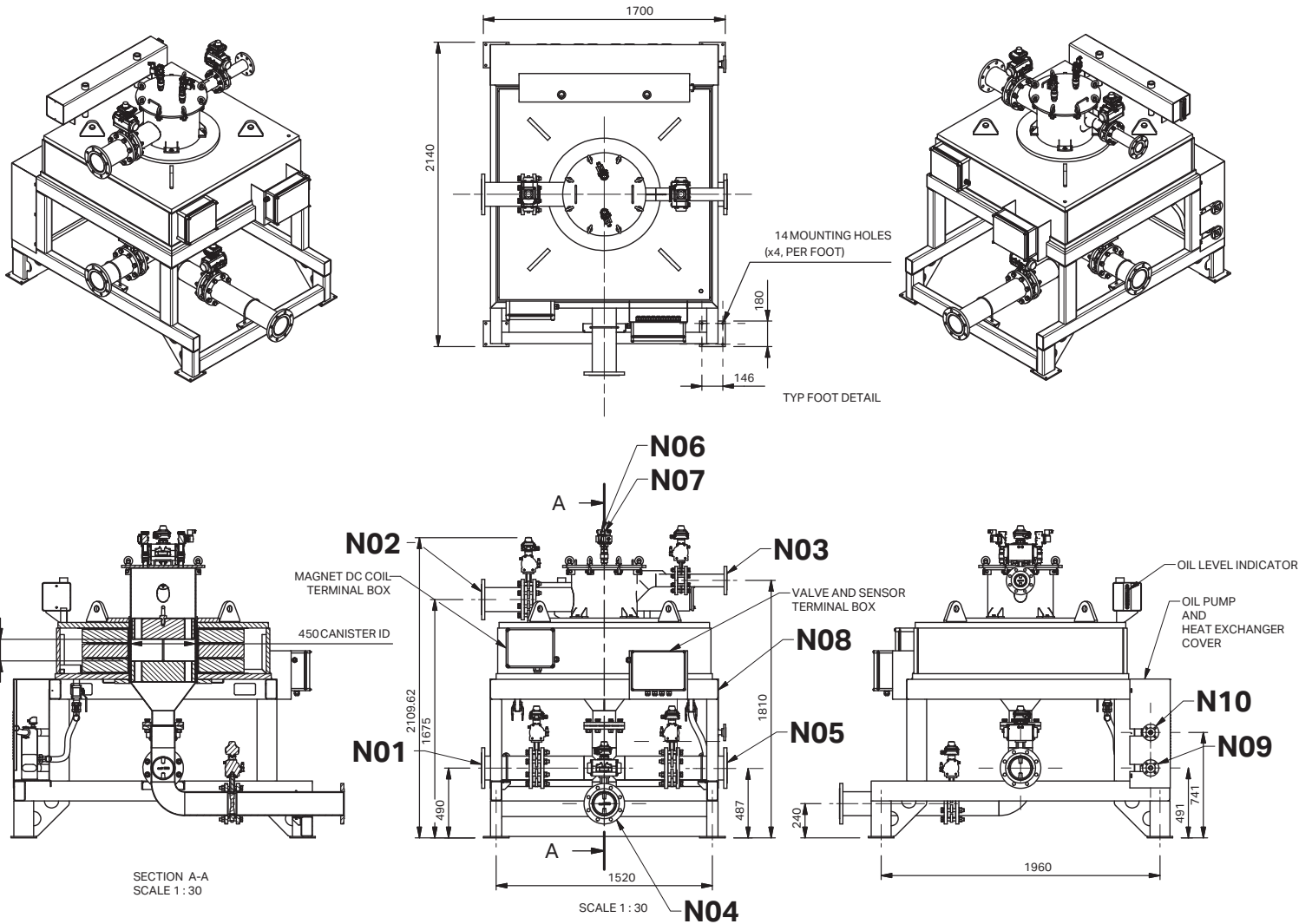
MODEL: HIWF350-50-CP



| NOZZLE TABLE | | | |
|--------------|--------|------------------------|---------------------|
| ITEM | NOZZLE | DESCRIPTION | SIZE/TYPE |
| 1 | N01 | PRODUCT FEED IN | DN80-PN16 RF FLANGE |
| 2 | N02 | FILTERED PRODUCT OUT | DN80-PN16 RF FLANGE |
| 3 | N03 | FLUSH WATER IN | DN40-PN16 RF FLANGE |
| 4 | N04 | FLUSH WATER/MAGS OUT | DN80-PN16 RF FLANGE |
| 5 | N05 | RECYCLE/MIDDINGS OUT | DN80-PN16 RF FLANGE |
| 6 | N06 | AIR IN - HIGH PRESSURE | 1" BSPF |
| 7 | N07 | AIR IN - LOW PRESSURE | 1" BSPF |
| 8 | N08 | AIR MANIFOLD (VALVES) | 10mm OD AIR FITTING |
| 9 | N09 | COOLING WATER IN | DN25-PN16 RF FLANGE |
| 10 | N10 | COOLING WATER OUT | DN25-PN16 RF FLANGE |

| TECHNICAL PARAMETERS | |
|---------------------------------------|--|
| MASS: | MAGNET ASSEMBLY: 3450 KG |
| | CONTROL CABINET: 420 KG |
| | WATER CHILLER (OPTIONAL): 150 KG |
| POWER INPUT: | 400V 50HZ 3PH or 480V 60HZ 3PH (OPTIONS) |
| GAUSS WITHOUT MATRIX: | 0-5000 G |
| MATRIX: | EXPANDED MESH - SIZE TBD - ORDERED SEPARATELY |
| COIL POWER: | 15.8 kW |
| COOLING SYSTEM | |
| DESCRIPTION: | COIL IS IN OIL. OIL IS WATER COOLED VIA HEAT EXCHANGER COOLING WATER IS COOLED VIA CLEAN FRESH WATER |
| OIL VOLUME: | 275 LTS |
| OIL PUMP: | 0.37 KW, 400V, 3PH, 50HZ, FLOW RATE: 140 L/MIN or 0.37 KW, 480V, 3PH, 60HZ, FLOW RATE: 140 L/MIN |
| COOLING WATER: | 60-75 L/MIN, TEMPERATURE < 20 DEG C |
| COMPRESSED AIR (FOR VALVE OPERATION): | |
| PRESSURE: | 6 BAR (MIN) |

MODEL: HIWF400-35-CP



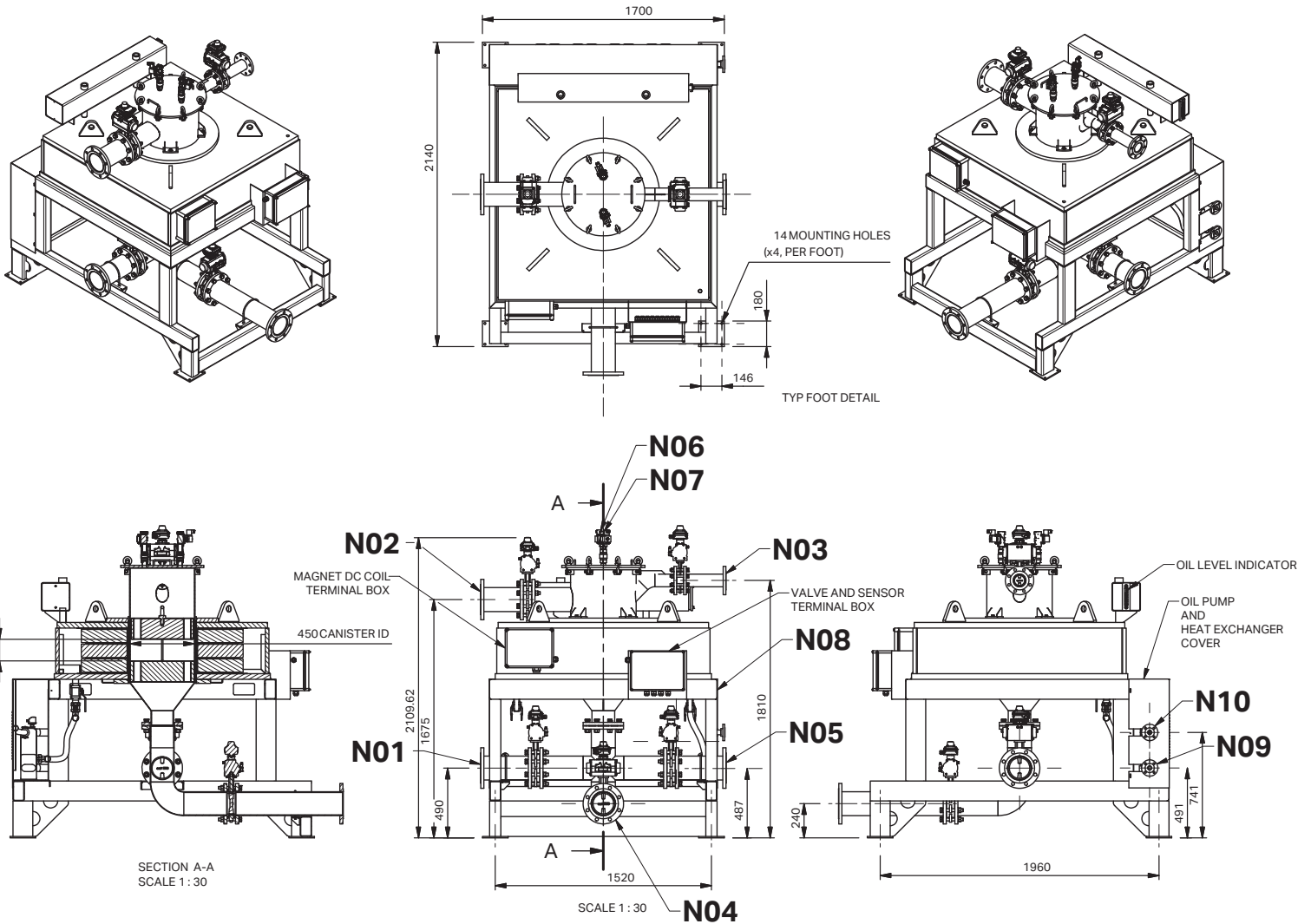
SECTION A-A
SCALE 1 : 30

SCALE 1 : 30

| NOZZLE TABLE | | | |
|--------------|--------|------------------------|----------------------|
| ITEM | NOZZLE | DESCRIPTION | SIZE/TYPE |
| 1 | N01 | PRODUCT FEED IN | DN150-PN16 RF FLANGE |
| 2 | N02 | FILTERED PRODUCT OUT | DN150-PN16 RF FLANGE |
| 3 | N03 | FLUSH WATER IN | DN80-PN16 RF FLANGE |
| 4 | N04 | FLUSH WATER/MAGS OUT | DN150-PN16 RF FLANGE |
| 5 | N05 | RECYCLE/MIDDINGS OUT | DN150-PN16 RF FLANGE |
| 6 | N06 | AIR IN - HIGH PRESSURE | 1" BSPF |
| 7 | N07 | AIR IN - LOW PRESSURE | 1" BSPF |
| 8 | N08 | AIR MANIFOLD (VALVES) | 10mm OD AIR FITTING |
| 9 | N09 | COOLING WATER IN | DN25-PN16 RF FLANGE |
| 10 | N10 | COOLING WATER OUT | DN25-PN16 RF FLANGE |

| TECHNICAL PARAMETERS | |
|---------------------------------------|--|
| MASS: | MAGNET ASSEMBLY: 3550 KG CONTROL CABINET: 380 KG WATER CHILLER (OPTIONAL): 150 KG |
| POWER INPUT: | 400V 50HZ 3PH or 480V 60HZ 3PH (OPTIONS) |
| GAUSS WITHOUT MATRIX: | 0-3500 G |
| MATRIX: | EXPANDED MESH - SIZE TBD - ORDERED SEPARATELY |
| COIL POWER: | 11 kW |
| COOLING SYSTEM | |
| DESCRIPTION: | COIL IS IN OIL. OIL IS WATER COOLED VIA HEAT EXCHANGER COOLING WATER IS COOLED VIA CLEAN FRESH WATER |
| OIL VOLUME: | 310 LTS |
| OIL PUMP: | 0.37 KW, 400V, 3PH, 50HZ, FLOW RATE: 140 L/MIN or 0.37 KW, 480V, 3PH, 60HZ, FLOW RATE: 140 L/MIN |
| COOLING WATER: | 60-75 L/MIN, TEMPERATURE < 20 DEG C |
| COMPRESSED AIR (FOR VALVE OPERATION): | |
| PRESSURE: | 6 BAR (MIN) |
| FLOW: | >120 L/MIN |

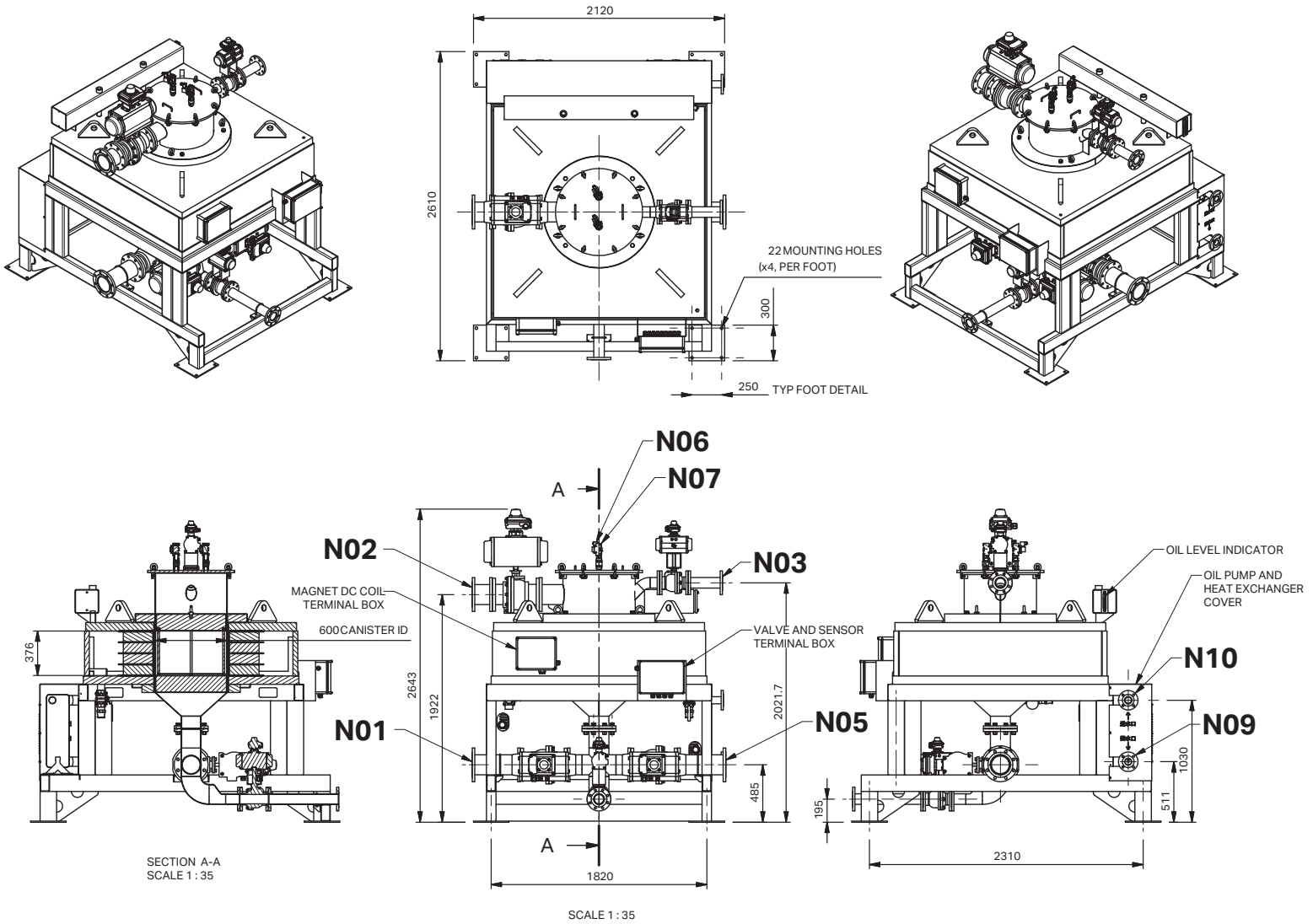
MODEL: HIWF400-50-CP



| NOZZLE TABLE | | | |
|--------------|--------|------------------------|----------------------|
| ITEM | NOZZLE | DESCRIPTION | SIZE/TYPE |
| 1 | N01 | PRODUCT FEED IN | DN150-PN16 RF FLANGE |
| 2 | N02 | FILTERED PRODUCT OUT | DN150-PN16 RF FLANGE |
| 3 | N03 | FLUSH WATER IN | DN80-PN16 RF FLANGE |
| 4 | N04 | FLUSH WATER/MAGS OUT | DN150-PN16 RF FLANGE |
| 5 | N05 | RECYCLE/MIDDINGS OUT | DN150-PN16 RF FLANGE |
| 6 | N06 | AIR IN - HIGH PRESSURE | 1" BSPF |
| 7 | N07 | AIR IN - LOW PRESSURE | 1" BSPF |
| 8 | N08 | AIR MANIFOLD (VALVES) | 10mm OD AIR FITTING |
| 9 | N09 | COOLING WATER IN | DN25-PN16 RF FLANGE |
| 10 | N10 | COOLING WATER OUT | DN25-PN16 RF FLANGE |

| TECHNICAL PARAMETERS | |
|---------------------------------------|--|
| MASS: | MAGNET ASSEMBLY: 3950 KG CONTROL CABINET: 450 KG WATER CHILLER (OPTIONAL): 150 KG |
| POWER INPUT: | 400V 50PH 3PH or 480V 60HZ 3PH (OPTIONS) |
| GAUSS WITHOUT MATRIX: | 0-5000 G |
| MATRIX: | EXPANDED MESH - SIZE TBD - ORDERED SEPARATELY |
| COIL POWER: | 18 kW |
| COOLING SYSTEM | |
| DESCRIPTION: | COIL IS IN OIL. OIL IS WATER COOLED VIA HEAT EXCHANGER COOLING WATER IS COOLED VIA CLEAN FRESH WATER |
| OIL VOLUME: | 290 LTS |
| OIL PUMP: | 0.37 KW, 400V, 3PH, 50HZ, FLOW RATE: 140 L/MIN or 0.37 KW, 480V, 3PH, 60HZ, FLOW RATE: 140 L/MIN |
| COOLING WATER: | 70-90 L/MIN, TEMPERATURE < 20 DEG C |
| COMPRESSED AIR (FOR VALVE OPERATION): | |
| PRESSURE: | 6 BAR (MIN) >120 L/MIN |

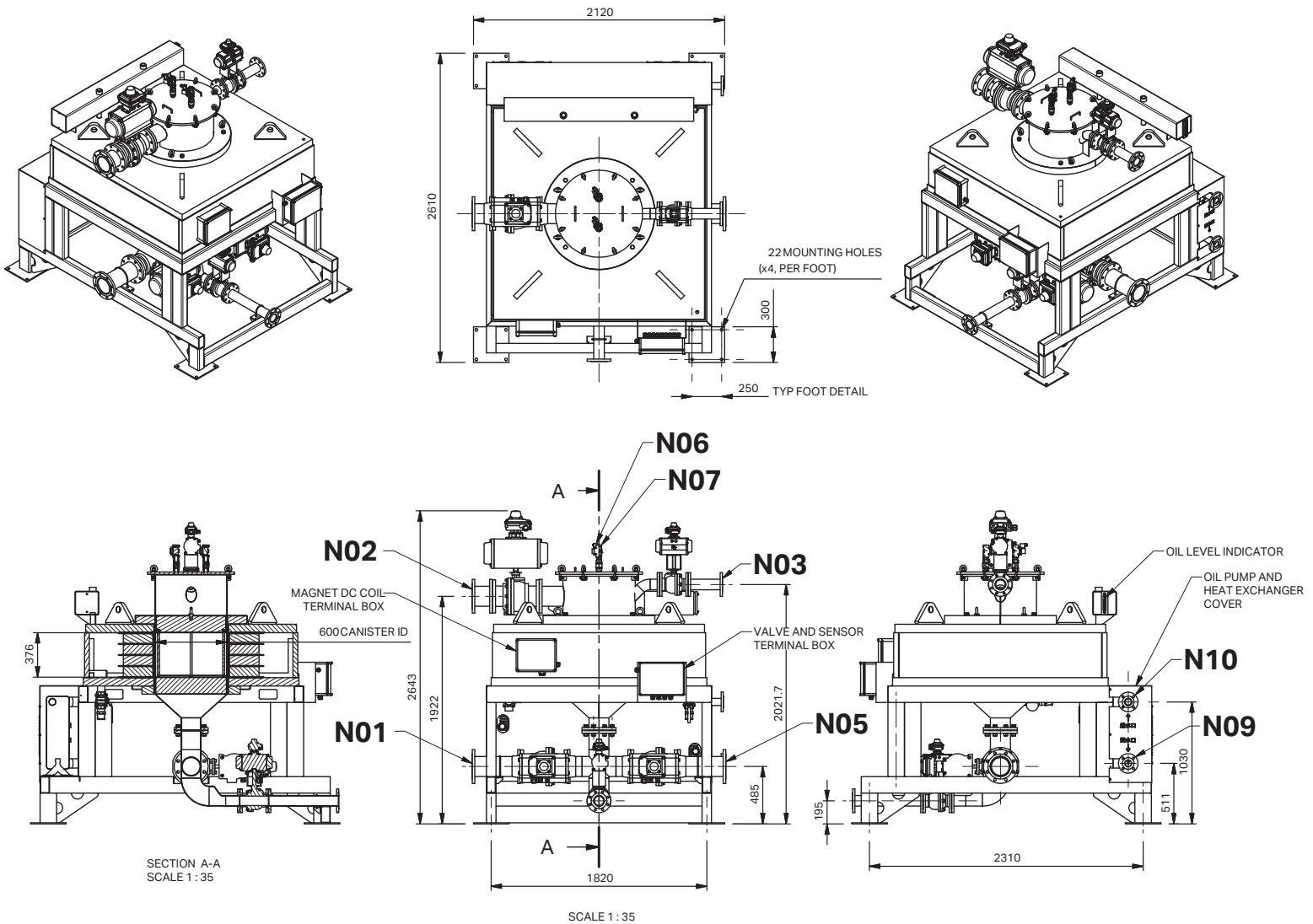
MODEL: HIWF600-35-CP



| NOZZLE TABLE | | | |
|--------------|--------|------------------------|----------------------|
| ITEM | NOZZLE | DESCRIPTION | SIZE/TYPE |
| 1 | N01 | PRODUCT FEED IN | DN150-PN16 RF FLANGE |
| 2 | N02 | FILTERED PRODUCT OUT | DN150-PN16 RF FLANGE |
| 3 | N03 | FLUSH WATER IN | DN80-PN16 RF FLANGE |
| 4 | N04 | FLUSH WATER/MAGS OUT | DN150-PN16 RF FLANGE |
| 5 | N05 | RECYCLE/MIDDINGS OUT | DN80-PN16 RF FLANGE |
| 6 | N06 | AIR IN - HIGH PRESSURE | 1" BSPF |
| 7 | N07 | AIR IN - LOW PRESSURE | 1" BSPF |
| 8 | N08 | AIR MANIFOLD (VALVES) | 10mm OD AIR FITTING |
| 9 | N09 | COOLING WATER IN | DN25-PN16 RF FLANGE |
| 10 | N10 | COOLING WATER OUT | DN25-PN16 RF FLANGE |

| TECHNICAL PARAMETERS | |
|---------------------------------------|--|
| MASS: | MAGNET ASSEMBLY: 5350 KG CONTROL CABINET: 450 KG WATER CHILLER (OPTIONAL): 150 KG |
| POWER INPUT: | 400V 50HZ 3PH or 480V 60HZ 3PH (OPTIONS) |
| GAUSS WITHOUT MATRIX: | 0-3500 G |
| MATRIX: | EXPANDED MESH - SIZE TBD - ORDERED SEPARATELY |
| COIL POWER: | 19 kW |
| COOLING SYSTEM | |
| DESCRIPTION: | COIL IS IN OIL. OIL IS WATER COOLED VIA HEAT EXCHANGER COOLING WATER IS COOLED VIA CLEAN FRESH WATER |
| OIL VOLUME: | 415 LTS |
| OIL PUMP: | 0.37 KW, 400V, 3PH, 50HZ, FLOW RATE: 140 L/MIN or 0.37 KW, 480V, 3PH, 60HZ, FLOW RATE: 140 L/MIN |
| COOLING WATER: | 80-100 L/MIN, TEMPERATURE < 20 DEG C |
| COMPRESSED AIR (FOR VALVE OPERATION): | |
| PRESSURE: | 6 BAR (MIN) |
| FLOW: | >120 L/MIN |

MODEL: HIWF600-50-CP



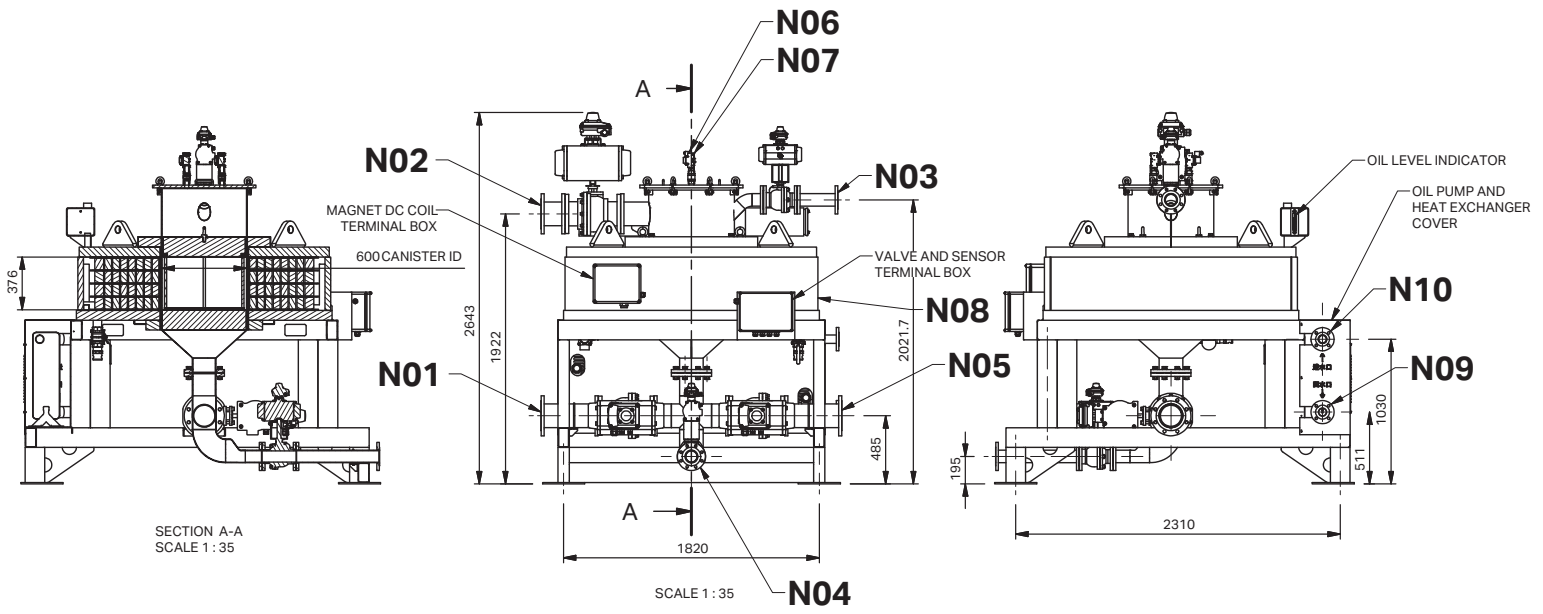
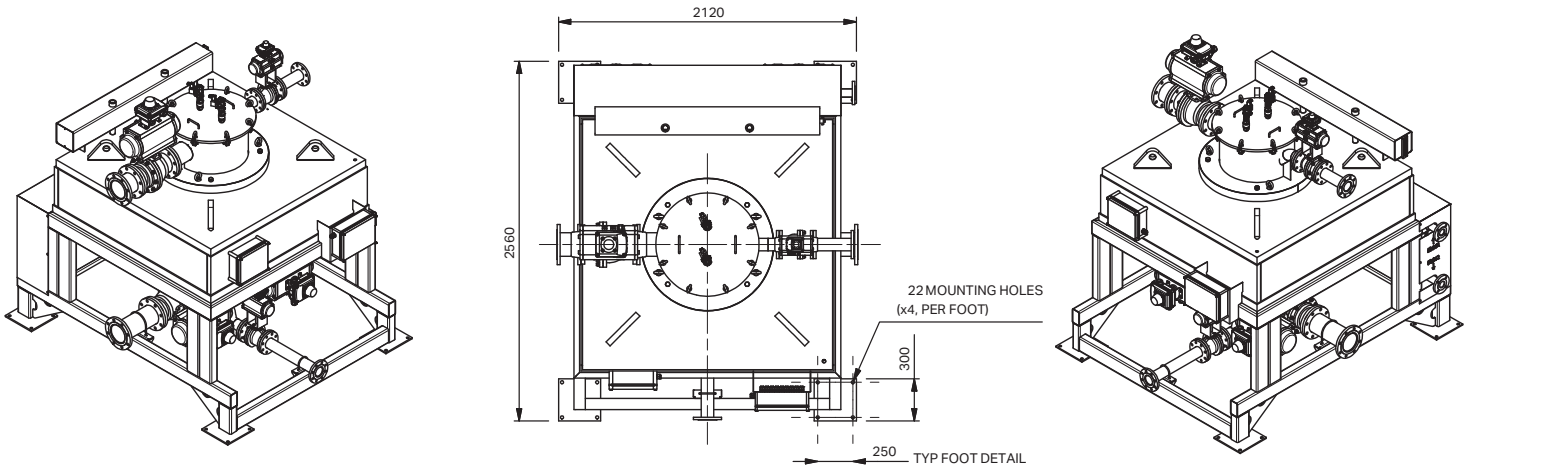
SECTION A-A
SCALE 1 : 35

SCALE 1 : 35

| NOZZLE TABLE | | | |
|--------------|--------|------------------------|----------------------|
| ITEM | NOZZLE | DESCRIPTION | SIZE/TYPE |
| 1 | N01 | PRODUCT FEED IN | DN150-PN16 RF FLANGE |
| 2 | N02 | FILTERED PRODUCT OUT | DN150-PN16 RF FLANGE |
| 3 | N03 | FLUSH WATER IN | DN80-PN16 RF FLANGE |
| 4 | N04 | FLUSH WATER/MAGS OUT | DN150-PN16 RF FLANGE |
| 5 | N05 | RECYCLE/MIDDINGS OUT | DN80-PN16 RF FLANGE |
| 6 | N06 | AIR IN - HIGH PRESSURE | 1" BSPF |
| 7 | N07 | AIR IN - LOW PRESSURE | 1" BSPF |
| 8 | N08 | AIR MANIFOILD (VALVES) | 10mm OD AIR FITTING |
| 9 | N09 | COOLING WATER IN | DN25-PN16 RF FLANGE |
| 10 | N10 | COOLING WATER OUT | DN25-PN16 RF FLANGE |

| TECHNICAL PARAMETERS | |
|---------------------------------------|--|
| MASS: | MAGNET ASSEMBLY: 6850 KG CONTROL CABINET: 550 KG WATER CHILLER (OPTIONAL): 150 KG |
| POWER INPUT: | 400V 50HZ 3PH or 480V 60HZ 3PH (OPTIONS) |
| GAUSS WITHOUT MATRIX: | 0-5000 G |
| MATRIX: | EXPANDED MESH - SIZE TBD - ORDERED SEPARATELY |
| COIL POWER: | 35 KW |
| COOLING SYSTEM | |
| DESCRIPTION: | COIL IS IN OIL. OIL IS WATER COOLED VIA HEAT EXCHANGER COOLING WATER IS COOLED VIA CLEAN FRESH WATER |
| OIL VOLUME: | 390 LTS |
| OIL PUMP: | 0.37 KW, 400V, 3PH, 50HZ, FLOW RATE: 140 L/MIN or 0.37 KW, 480V, 3PH, 60HZ, FLOW RATE: 140 L/MIN |
| COOLING WATER: | 140-150 L/MIN, TEMPERATURE < 20 DEG C |
| COMPRESSED AIR (FOR VALVE OPERATION): | |
| PRESSURE: | 6 BAR (MIN) >120 L/MIN |

MODEL: HIWF600-100-CP



SECTION A-A
SCALE 1:35

SCALE 1:35

| NOZZLE TABLE | | | |
|--------------|--------|------------------------|----------------------|
| ITEM | NOZZLE | DESCRIPTION | SIZE/TYPE |
| 1 | N01 | PRODUCT FEED IN | DN150-PN16 RF FLANGE |
| 2 | N02 | FILTERED PRODUCT OUT | DN150-PN16 RF FLANGE |
| 3 | N03 | FLUSH WATER IN | DN80-PN16 RF FLANGE |
| 4 | N04 | FLUSH WATER/MAGS OUT | DN150-PN16 RF FLANGE |
| 5 | N05 | RECYCLE/MIDDINGS OUT | DN80-PN16 RF FLANGE |
| 6 | N06 | AIR IN - HIGH PRESSURE | 1" BSPF |
| 7 | N07 | AIR IN - LOW PRESSURE | 1" BSPF |
| 8 | N08 | AIR MANIFOLD (VALVES) | 10mm OD AIR FITTING |
| 9 | N09 | COOLING WATER IN | DN25-PN16 RF FLANGE |
| 10 | N10 | COOLING WATER OUT | DN25-PN16 RF FLANGE |

| TECHNICAL PARAMETERS | |
|---------------------------------------|--|
| MASS: | MAGNET ASSEMBLY: 10950 KG CONTROL CABINET: 650 KG WATER CHILLER (OPTIONAL): 150 KG |
| POWER INPUT: | 400V 50HZ 3PH or 480V 60HZ 3PH (OPTIONS) |
| GAUSS WITHOUT MATRIX: | 0-10000 G |
| MATRIX: | EXPANDED MESH - SIZE TBD - ORDERED SEPARATELY |
| COIL POWER: | 85 kW |
| COOLING SYSTEM | |
| DESCRIPTION: | COIL IS IN OIL. OIL IS WATER COOLED VIA HEAT EXCHANGER COOLING WATER IS COOLED VIA CLEAN FRESH WATER |
| OIL VOLUME: | 600 LTS |
| OIL PUMP: | 0.37 KW, 400V, 3PH, 50HZ, FLOW RATE: 140 L/MIN or 0.37 KW, 480V, 3PH, 60HZ, FLOW RATE: 140 L/MIN |
| COOLING WATER: | 160-200 L/MIN, TEMPERATURE < 20 DEG C |
| COMPRESSED AIR (FOR VALVE OPERATION): | |
| PRESSURE: | 6 BAR (MIN) |
| FLOW: | >120 L/MIN |